

GateLAN



Audio and Video door-entry Systems over LAN

- **Audio and audio/video door-entry units**
- Easy to install, it do not require laying special cables but it can use the existing LAN by sharing it with other systems; you can use LAN on cables, on fibres as well as wireless.
- **Good audio quality thanks to the adaptive filters adopted for the cancellation of the echo and anti-Larsen**
- Reception of the calls on PC through special software. For the systems with audio only, it is possible to use stand-alone equipment.
- **Pre-recorded help messages (multilingual) played by the loudspeaker when the call is in progress**
- You have at your's disposal 3 relay on the external unit that you can control remotely in order to open the gate, to control the lights or similar.
- **When you push the call button, the external unit starts a control that you can use in order to control a CCTV camera.**
- You have the possibility to start the CCTV camera and the microphone included on the external unit from the receiving unit in order to perform a remote surveillance.

GateLAN is an audio/video door-entry system over LAN Ethernet. The video door-entry units as well as the audio door-entry units are apparatuses that you can connect to the LAN directly, without interfaces or auxiliary devices by using the VoIP approach (Voice Over IP).

When you use a system with audio, you can use in order to receive the calls both stand-alone units and software units (PC) while when you use a video system you must adopt the software units only; by using a PC with the receiving **GateLAN.SW** software it is also possible to install audio units and video units in the same system.

The LAN that connects the system can be made in cable, in fiber or in wireless indifferently.

The direct connection to the LAN of the apparatuses and the adoption of the protocol TCP/ IP for the transmission of the data allows to expand the system in any moment in simple way; in fact, to add a new door-entry unit requires only to add on the LAN a new apparatus with a new address IP.

You can receive the images coming from our video door entry system over LAN by means of a PC, connected to the same LAN, that runs the software **GateLAN.SW**; moreover this software allows you to receive the calls coming from audio door entry units.

On the PC that receive the calls you must install a loudspeaker in order to reproduce the calling tone and an USB handset in order to carry out the conversation.

In the case of the intercoms, besides you can use a stand-alone unit as receiving equipment.

Every button of the video door-entry unit can call up to five receiving units by means of programmable priority criteria, that include the automatic deviation; in the case of the audio door-entry units the maximum number of receiving units that the system can manage with each button is two.

In both the cases from each of the units that receive the calls it is possible to activate, with special control, three relays present on the audio door-entry and on the video-door entry units in order to let to open doors or similar.



Moreover, it is available a further output that is automatically activated in coincidence to the pressure of the call button; this is useful, for instance, for the selection of external CCTV cameras.

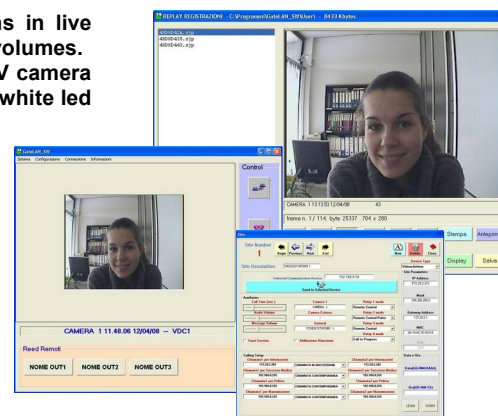
The audio units and the video units of the **GateLAN** family are supplied in outdoor enclosure entirely made in stainless steel ready to be installed on wall, on the back side you can find the predisposition for the passage of the cables. Both for the audio units and for the video units you can have versions with one or with 4 call buttons, these last ones allow the management of 4 different users.



The conversation between the user and the operator happens in live voice with an excellent audio quality, even with high sonorous volumes.

When you use the video units **GateLAN.VD**, a high quality CCTV camera (color) assures a clear vision even with low light thanks to two white led placed on the front of the apparatus.

Both the audio units and the video units, while the call is in progress, reproduce pre-recorded messages that informs the user about the state of the call by means of the loudspeaker.



On the receiving units managed through the software **GateLAN.SW** is possible to effect the recording of the calls; from such units, besides it is possible to activate the external unit so that to visualize the images, and to listen to the sounds (surveillance feature).

Moreover, it is possible to vary the frame-rate of images acquisition; thanks to this function, by reducing the number of images per second, it is possible to reduce the band used when this is most important as in the case of use of wireless connection.

The configuration of the functional parameters and the maintenance of the firmware of the apparatuses happens through the LAN by means of the **SetLAN.SW** software that we supply with the apparatuses; this software allows you to operate from an any point of the LAN without the necessity to directly intervene on the apparatus with a remarkable saving of times and costs.

Besides, if necessary, it will be simple to redraw the configuration of the system by moving the interested intercoms on new access points of the LAN.

CARATTERISTICHE TECNICHE		
	CITOFONI	VIDEOCITOFONI
Codec audio	Lineare – 8 KHz – 16 bit	
Occupazione banda audio	Circa 175 Kbit (upload e download) esclusivamente a conversazione in atto	
Occupazione banda video	-	Da 1 a 4 Mbit in relazione al frame rate impostato
Telecamera	-	Colori con illuminatore
Microfono	Unidirezionale – Preamplificazione 0/20 dB	
Altoparlante	Cono in Mylar – Potenza 2,5W regolabili su programmazione	
Pulsanti chiamata	1 o 4 con portacartellino per inserimento nominativo chiamato	
Segnalazioni	Led a luce rossa alta efficienza	
Uscite ausiliarie	3 uscite relays comandabili da remoto – 1 uscita attivata dal pulsante di chiamata	
LAN	10/100 base T – connettore RJ45 in accordo allo standard IEEE 802-3	
Processore	MultiMedia DSP 32 bit / 300 MHz	
Alimentazione	24 V alternati o continui	
Temperatura esercizio	-10 C° / +50 C°	
Dimensioni di ingombro	146,5 x 233 x 97 (L x H x P - mm)	146,5 x 309 x 105,5 (L x H x P - mm)

